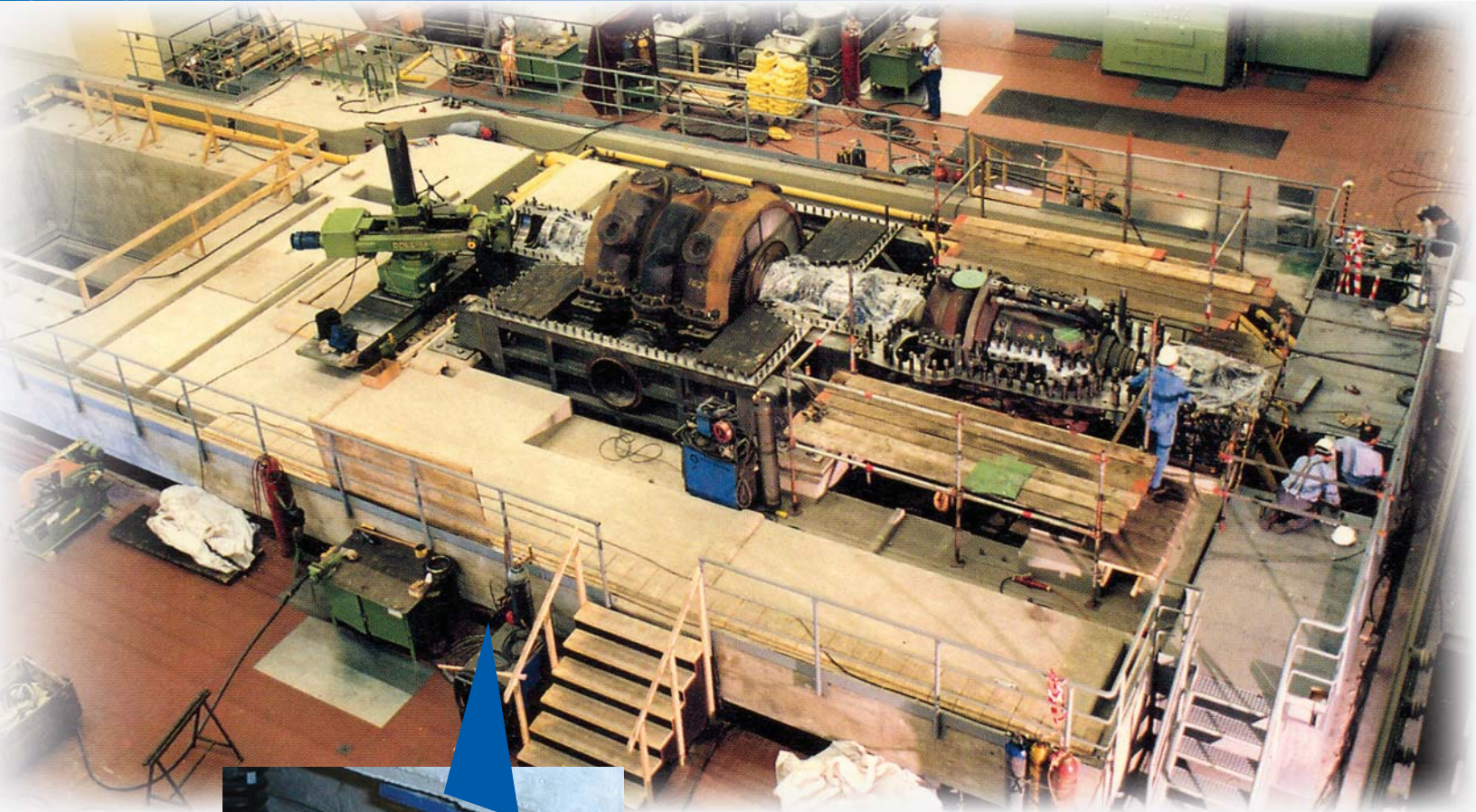


**PROVEN VIBRATION ISOLATION AND FOUNDATION DESIGN**



***Fabreeka's Expertise Includes:***

- ◆ **Vibration Measurement**
- ◆ **Static, Dynamic and Structural Analysis**
- ◆ **Foundation Design**
- ◆ **Program Management**
- ◆ **Spring and Elastomeric Vibration Isolation Solutions**

## Foundation Isolation

In some applications, it is not feasible to mount equipment directly on vibration isolators. INFAB™ elastomeric (rubber) isolators provide low frequency isolation from induced shock and vibration for applications requiring support foundations and inertia blocks. Fabreeka® INFAB™ vibration isolation systems are comprised of molded elastomer, which has been designed to provide low frequency isolation for foundation isolation applications.

FABSORB™ foundation isolation material is an effective vibration isolation material that has been specifically designed for vibration isolation applications of support foundations for machine tools, shock testing equipment, grinders, etc. FABSORB™ material absorbs machine induced energy, limits the transmission of higher frequency disturbances and provides isolation from ambient and induced shock and vibration, which otherwise would affect the accuracy of the machine being installed.



Foundation isolated on INFAB™ elastomeric isolators.

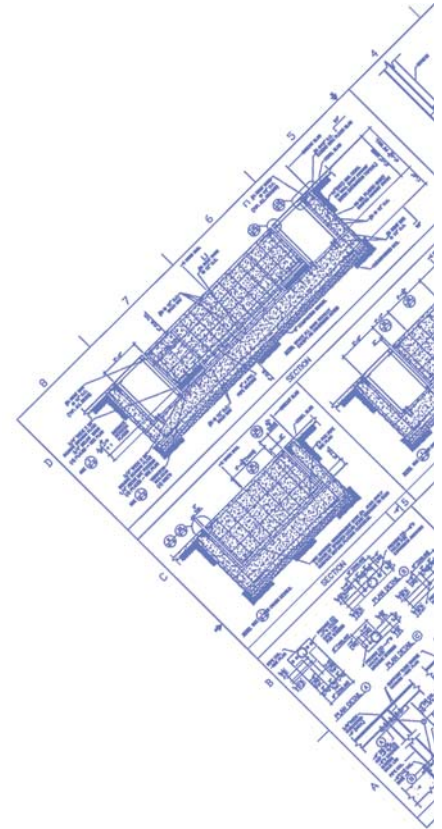
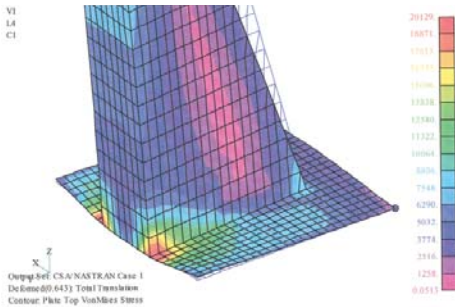


Turbine foundation supported by spring isolators with integral viscous dampers.

## Structural Design & Analysis

Inertia blocks and support foundations are sometimes required as part of an isolation system design. Fabreeka's® expertise includes the design of rigid concrete masses and structural steel forms, which are often an integral part of an isolation system design.

Our Civil and Structural Engineers design to frequency and stiffness specifications associated with the payload and stiffness requirements of the isolation system. Our capabilities include stress analysis, static analysis and structural design and analysis. The results of these analyses are used together with the dynamic and modal analysis to complete a foundation or fabricated support platform design.



**World Headquarters**  
**Fabreeka International Inc.**  
PO Box 210  
1023 Turnpike Street  
Stoughton, MA 02072  
Tel: (800) 322-7352  
Tel: (781) 341-3655  
Fax: (781) 341-3983  
E-mail: info@fabreeka.com

**Canada**  
**Fabreeka Canada Ltd**  
2907 Portland Drive  
Oakville  
ON L6H 5S4  
Tel: (800) 322-7352  
Fax: (781) 341-3983  
E-mail: info@fabreeka.com

**Holland**  
**Fabreeka bv Holland**  
Molenwerf 12  
Postbus 133  
1910 AC Uitgeest  
Tel: 31 - (0)2513 20305  
Fax: 31 - (0)2513 12830  
E-mail: info@fabreeka.nl

**Germany**  
**Fabreeka GmbH Deutschland**  
Hessenring 13  
Postfach 103 (D-64570)  
D-64572 Büttelborn  
Tel: 49 - (0)6152-9597-0  
Fax: 49 - (0)6152-9597-40  
E-mail: info@fabreeka.de

**England**  
**Fabreeka International Inc.**  
8 - 12 Jubilee Way  
Thackley Old Road Shipley  
West Yorkshire BD18 1QG  
Tel: 44 - (0)1274 531333  
Fax: 44 - (0)1274 531717  
E-mail: info@fabreeka-uk.com