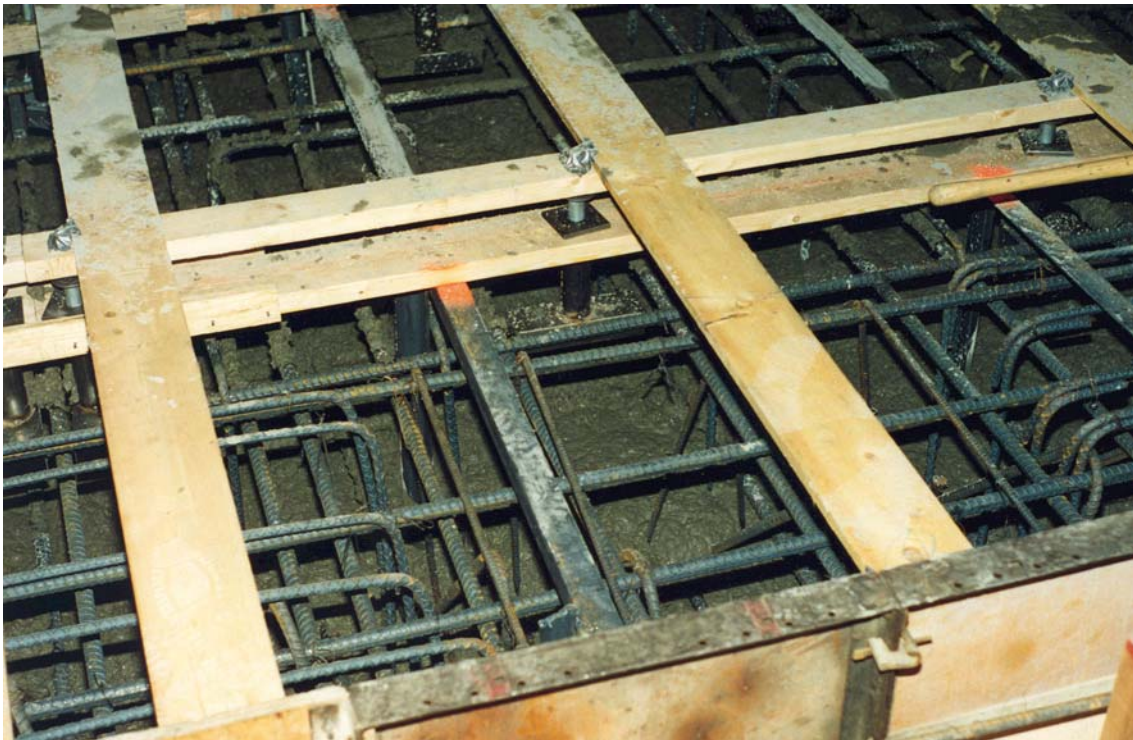


Ford (AEC) Advanced Engineering Center



Forming the 30' x 32' x 5' mass and installing rebar prior to concrete pour.



After inspection of rebar layout, forms for the bed plate anchor bolts are installed.



Concrete sample testing during the mass pour.



Concrete pour. The mass will weigh approximately 720,000 lbs without bed plate or dynamometers installed.



Installing and levelling the bed plate on the anchor bolts. The dynamometers will be installed on the bed plate and will weigh over 40,000 lbs.



Finished mass with bed plate. The bed plate weighs an additional 85,000 lbs.



Ten pneumatic isolators support and isolate the test mass. The dynamometers with payload increase the total supported load to over 900,000 lbs.

Each isolator has a lifting capacity of over 100,000 lbs. The vertical and horizontal natural frequencies are 1.4 Hz.

