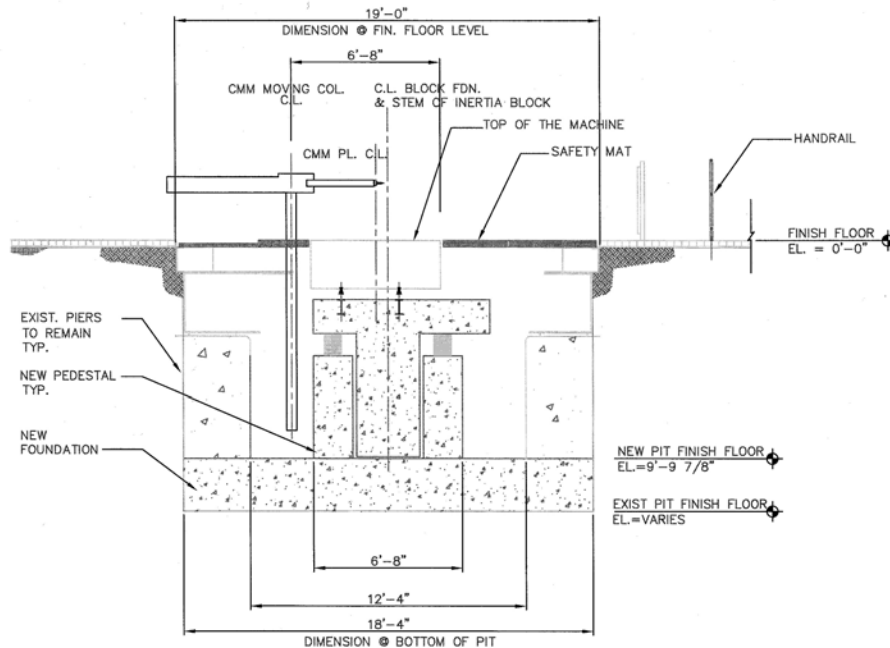


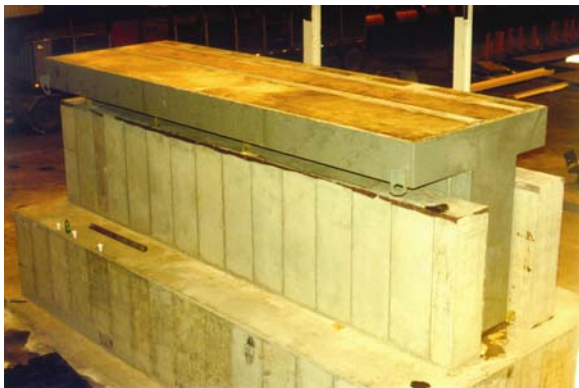
Fabreeka® Isolates Brown & Sharpe CMM at Ford

Fabreeka® has isolated a Brown & Sharpe PCR 60.15.20 Horizontal Arm CMM at the Ford Frame Plant in Michigan.



2 SECTION
A-1 SCALE: 1/4" = 1'-0"

Fabreeka® provided the structural design and fabricated the CMM support mass.



The support mass is isolated by ten pneumatic isolators each having a natural frequency of 1.5 Hz. The total isolated payload weighs over 200,000 lbs.

The CMM operates at the first floor level in close proximity to large capacity presses. Low frequency isolators are required to maintain the CMM's accuracy.



Please contact Fabreeka® with any questions or to discuss your application.

Fabreeka® International, Inc.
1023 Turnpike Street
PO Box 210
Stoughton, MA 02072
T: 1-800-322-7352 or 781-341-3655
F: 781-341-3983
E: info@fabreeka.com
www.fabreeka.com