

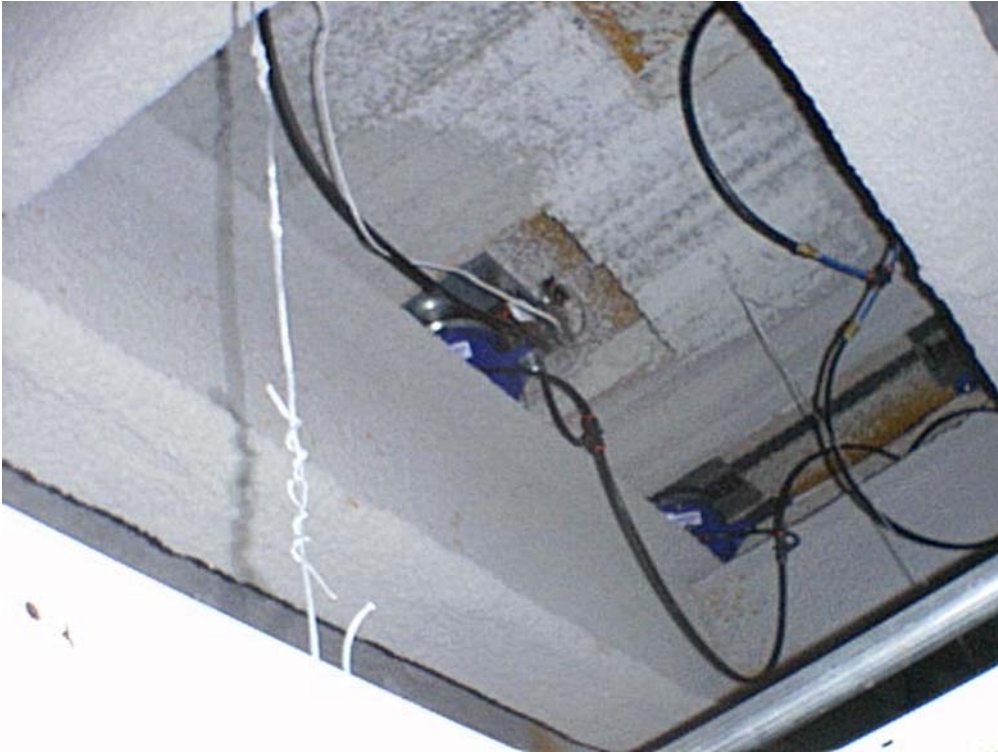
Isolation of MRI Unit



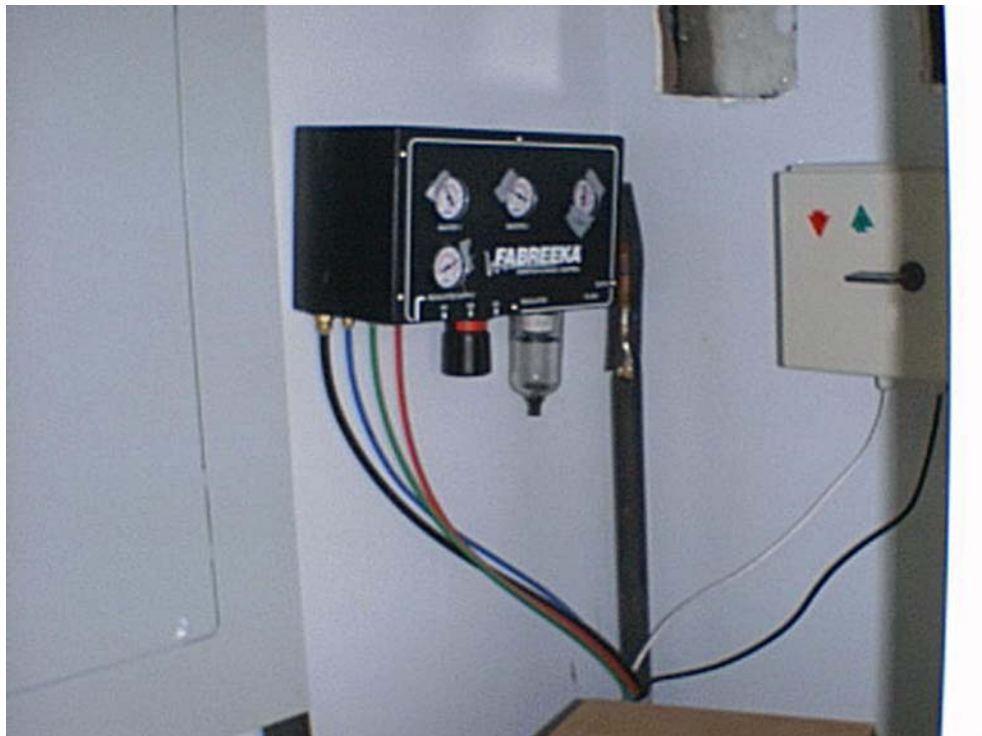
A sensitive magnetic resonance imaging (MRI) unit is isolated on a Fabreeka pneumatic isolation system.



Access area to isolation system in parking garage. MRI unit is located on the second floor of the building.



Isolation system pneumatic isolator placement on structural support beams.



Isolation system pneumatic and electronic control panels.